

BEFORE



AFTER



Hypopigmented scar revision



Pigmentation and scar remodelling



Acne scar revision

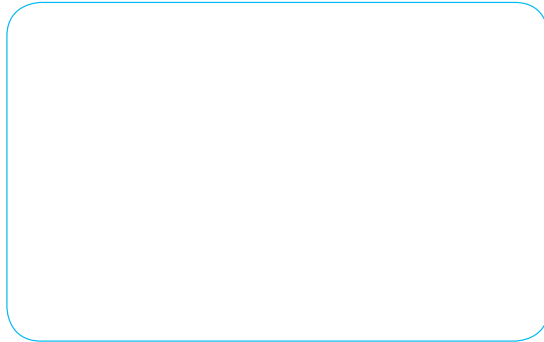
ReCell<sup>®</sup> Spray-On Skin<sup>®</sup> restores and enhances, damaged or injured skin

- Scars due to acne, surgery, burns and trauma, aesthetic treatments
- Sun-damaged skin
- Discolouration (hypo/hyperpigmentation)
- Stable Vitiligo

### For More Information

Each patient is individual and your doctor will be able to tell you if you are suitable for this procedure.

Ask your doctor how ReCell<sup>®</sup> Spray-On Skin<sup>®</sup> can help you get the result you want.

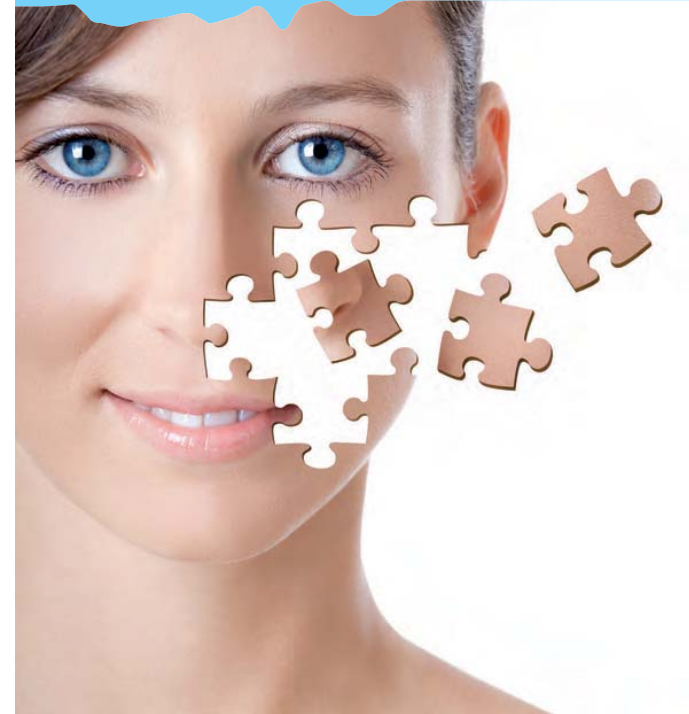


ReCell<sup>®</sup> treatments should always be performed by a trained practitioner.

avita<sup>medical</sup>  
www.avitamedical.com

Avita Medical Europe Ltd (Manufacturer)  
1<sup>st</sup> Floor, Unex House  
132-134 Hills Road  
Cambridge  
CB2 8PA  
UNITED KINGDOM

reCELL<sup>®</sup>  
SPRAY-ON SKIN<sup>®</sup>



THE REVOLUTION IN  
SKIN REGENERATION



www.recell.info

reCELL®  
SPRAY-ON SKIN®



## THE REVOLUTION IN SKIN REGENERATION

ReCell® Spray-On Skin® is a revolutionary technology that allows you to regenerate, restore and rejuvenate areas of damaged, scarred or discoloured skin with your own healthy, new skin. Your body grew healthy, beautiful skin once - with ReCell® you can do it again.

ReCell® can be utilised in conjunction with other skin resurfacing technologies during cosmetic surgery to enhance healing and reduce the formation of scars and blotchy skin<sup>1</sup>.

### Ask your doctor if ReCell® can help you

Your doctor can discuss this revolutionary new treatment with you and determine if ReCell® is appropriate for you.

### ReCell® has been successfully used to:

- Improve the appearance of acne scars.
- Remove areas of discolouration - this may include dark (hyperpigmented) areas and light (hypopigmented) areas<sup>2</sup>.
- Restore pigmentation to stable Vitiligo patients<sup>3</sup>.
- Improve and enhance the appearance of scars from trauma, burns, surgery and other causes, returning the texture and colour<sup>4</sup>.
- Restore pigmentation and texture to skin areas damaged by injury or resulting from resurfacing treatments such as chemical peels and laser treatments.

### How does ReCell® Spray-On Skin® work?

ReCell® works by harnessing the body's innate ability to regenerate and regrow tissue, essentially recapturing the process that went into forming your skin as a baby.

### The process is quick and simple

Your surgeon will take a very small piece of your own healthy skin, approximately the size and thickness of a postage stamp, from an area near the region to be treated. The skin sample is placed into a processing unit that separates the healthy growing skin cells which are then suspended in a liquid. This 'cell suspension' contains all of the skin cells necessary to promote healthy skin growth: keratinocyte cells that form the basis of healthy skin, fibroblasts which produce collagen providing texture and 'fullness' and melanocytes that produce skin colour (melanin). This suspension contains only your own skin cells - there are no added chemicals or growth hormones - your body's natural regeneration processes provide all that is needed for the regrowth of healthy new skin. The area to be treated is prepared using dermabrasion or laser to remove the aged, damaged or discoloured skin. Your healthy reactivated skin cells in the cell suspension are then sprayed over the prepared area. The cells in the sprayed suspension rapidly multiply, spread across the prepared area and grow to form your new skin in 5-7 days<sup>1</sup>. During this time the treated area will be protected with a special dressing.

### Does the treatment hurt?

As ReCell® is a minimally invasive procedure, appropriate anaesthesia will be administered by your surgeon. In most cases, there is only minor discomfort during the procedure and the healing process.

### What must I bear in mind after the treatment?

Your healthcare professional will give you specific aftercare instructions including the use of sun screen. But as a general rule the dressings will be removed by your health care professional after 5-7 days when the new skin has formed.

### How much down time is there? When can I go back to work/socialising?

This will depend on the area being treated. In most cases normal routines can be maintained as long as care is taken not to compromise the treated area.

### How long until I can see a result?

This will depend on the reason for your ReCell® treatment, immediately the cells start to multiply and will form the first layer of skin within 7 days. The cells form the proper thickness and the pigment cells (melanocytes) begin to release the melanin that gives your skin colour<sup>4</sup>. Colouration, texture and appearance will continue to improve over the next few months.

1. Conti, E., Wood, F., & Leclerc-Chalvet, M. (2009). ReCell®: Indications, Clinical practice and Expected outcome. *Journal of Wound Technology*(4), 59-62.
2. Cervelli, V., De Angelis, B., Spallone, D., Lucarini, L., Arpino, A., & Balzani, A. (2009). Use of a novel autologous cell-harvesting device to promote epithelialization and enhance appropriate pigmentation in scar reconstruction. *Clinical and Experimental Dermatology*, 35(7), 776-780.
3. Cervelli, V., De Angelis, B., Balzani, A., Colicchia, G., Spallone, D., & Grimaldi, M. (2009). Treatment of stable vitiligo by ReCell system. *Acta Dermatovenerologica Croatica*, 17(4), 273-278.
4. Goodman, G. J. (2008). An Automated Autologous Cell Transplantation Method for the Treatment of Hypopigmented Scarring. *Dermatologic Surgery*, 34(4), 578-581.